



PARFAIT
AW24 COLLECTION

PARFAIT

COLLECTION AW2024

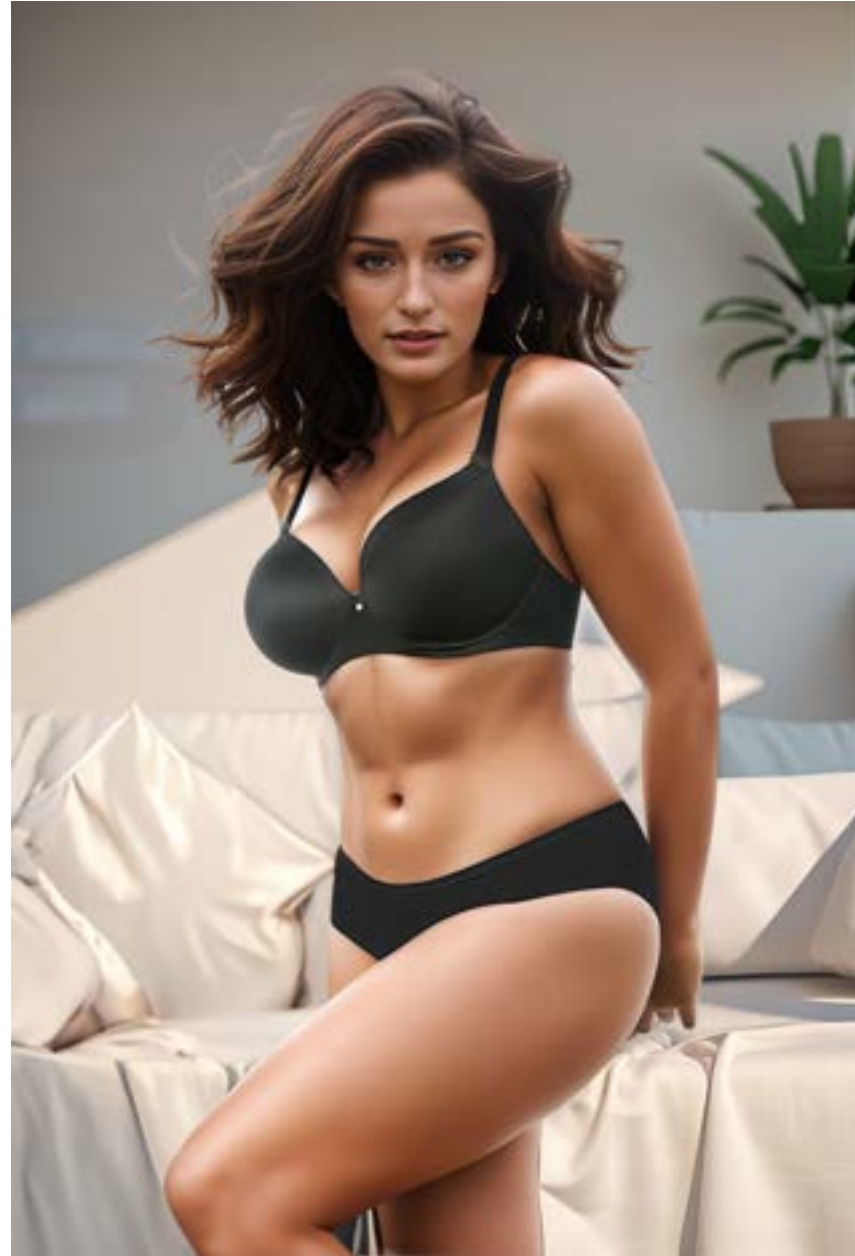


Parfait's newest collection continues to celebrate women of all sizes by offering more styles up to an H cup & our unique hybrid sizing, Small - 3X Plus!

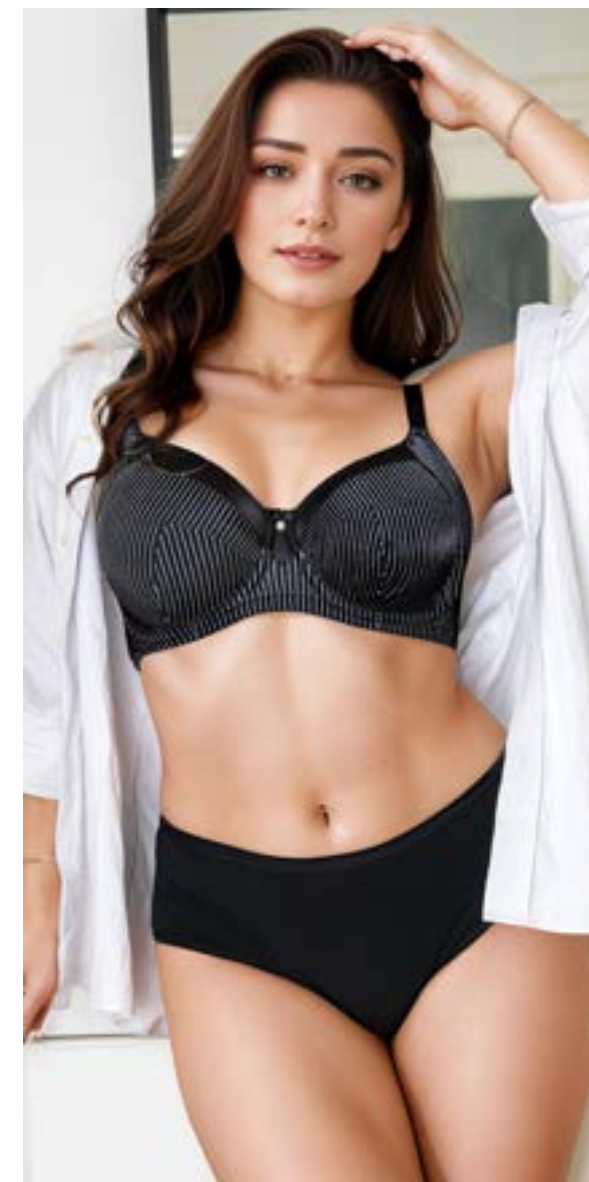
TABLE OF CONTENTS

ADELE	15	MIA DAISY	43	LEILA	71
ADRIANA	17	MIA DOT	45	ACTIVE	73
CASEY	19	MIA DOT BODYSUIT	47	DYNAMIC	75
CHARLOTTE	21	MIA LACE	49	WAVE	77
DALIS	23	MIA LACE CHEMISE	51	MICRO DRESSY	79
DOLLY	25	PEARL MINIMIZER	53	BONDED FRENCH CUT	80
ELISE T-SHIRT	27	PEARL UNLINED	55	BONDED HIPSTER	81
ELISE STRAPLESS	29	PEARL LONGLINE	57	COZY HIPSTER	82
ELISE BUSTIER	31	SHEA UNLINED	59	COZY BRIEF	83
ELISSA BUSTIER	33	SHEA SPACER	61	MIA HIPSTER	84
ENORA	35	SHEA SLIMMER BRIEF SHEA	63	PEARL FRENCH CUT	85
ERIKA WIRE-FREE NURSING	37	SHEA LONGLINE	65	STEVIE HIGH WAIST THONG	86
ERIKA UNLINED	39	STEVIE BUSTIER	67	SHEA BRIEF	87
MARISSA	41	STEVIE UNLINED	69		

ELISE P6270 T-SHIRT BRA



ADELE P61321 UNLINED WIRED BRA



PEARL P60921 NON-PADDED SEAMLESS MINIMIZER BRA



PEARL P6093 FRENCH CUT



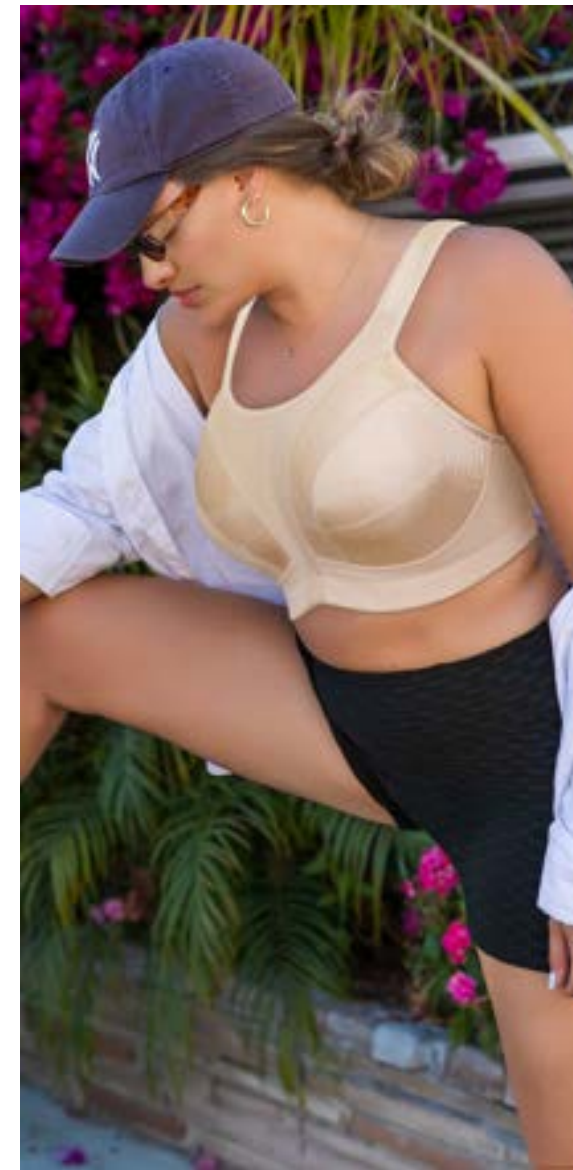
STEVIE P50125 UNLINED WIRED BRA



STEVIE P50124
HIGH WAIST THONG



ACTIVE P62121 WIRE-FREE ACTIVE BRA



AW24	
JULY	 <p>ELISE P6270 T-SHIRT BRA Nude Black</p>
AUGUST	 <p>ADELE P6132 UNLINED WIRED BRA Nude Black Stripes</p>
SEPTEMBER	 <p>PEARL P6092 NON-PADDED SEAMLESS MINIMIZER BRA RIO RED</p>  <p>PEARL P6093 FRENCH CUT RIO RED</p>
OCTOBER	 <p>STEVE P6005 UNLINED WIRED BRA BLACK FAUX LEATHER</p>  <p>STEVE P6004 HIGH WAIST THONG BLACK FAUX LEATHER</p>
NOVEMBER	 <p>ACTIVE P6211 WIRE-FREE ACTIVE BRA BLACK</p>  <p>ACTIVE P6212 WIRE-FREE ACTIVE BRA Nude</p>

ADELE



ADELE

P61321 UNLINED WIRED BRA

Introducing Adele, our new modern full coverage seamed, unlined bra. Ultimate fit and support to make your bust the best that it can be! This will be the go to seamed bra for women of all shapes and sizes. Features include a 4-part cup with side sling for ultimate lift, sheer mesh neckline and powermesh back. Stylish details include an elegant tuxedo bow with pearl charm and peekaboo keyhole.

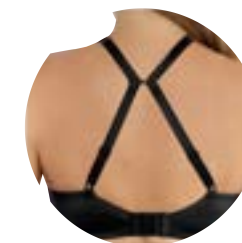
BLACK STRIPE, BARE

UK 30-42D, DD, E, F, FF, G, 30-40GG, H

EU 65-95D, E, F, G, H, I, 65-90J, K

FR 80-110D, E, F, G, H, I, 80-105J, K

USA 30-42D, DD, DDD, G, H, I, 30-40J, K



Powermesh back Straps with J hook for ultimate support

Elegant Tuxedo Bow with pearl charm

Modern front sheer mesh keyhole



Stretch mesh at neckline for ease of fit

4 part cup with side sling for shape and support

FASHION





ADRIANA

P5482 WIRE-FREE LACE BRALETTE

Pretty and lacy, this wire-free bralette is very supportive and super comfortable. The convertible J-hook feature allows for a racerback option. Especially designed for full figured women.

PETAL PINK

UK 32E-F, 34-38D,DD,E,F,FF,G,GG,H

EU 70F-G, 75-85D,E,F,G,H,I,J,K

FR 85F-G, 90-100D,E,F,G,H,I,J,K

USA 32DDD-G, 34-38D,DD,DDD,G,H,I,J,K

SAPPHIRE

UK 30-40D,DD,E,F,FF,G,GG,H

EU 65-90D,E,F,G,H,I,J,K

FR 80-105D,E,F,G,H,I,J,K

USA 30-40 D,DD,DDD,G,H,I,J,K

PEARL WHITE, BARE, BLACK, RACING RED

UK 30-42D,DD,E,F,FF,G, 30-40 GG,H

EU 65-95D,E,F,G,H,I, 65-90J,K

FR 80-110D,E,F,G,H,I, 80-105J,K

USA 30-42D,DD,DDD,G,H,I, 30-40J,K



CASEY



CASEY

2801 PLUNGE MOLDED T-SHIRT BRA
28013 PLUNGE MOLDED T-SHIRT BRA
28012 PLUNGE MOLDED T-SHIRT BRA

Our favorite T-shirt bra is now available in Denim! Casey features a deep plunge and light foam contour cups. The pretty lace sling helps provide extra support and lift for full busted and full figured women.

BLACK MOSAIC, EUROPEAN NUDE, BLACK W/ ROSE PRINT

UK 34-40C, 30-40D, DD, E, F, FF, G, GG, H

EU 75-90C, 65-90D, E, F, G, H, I, J, K

FR 90-105C, 80-105D, E, F, G, H, I, J, K

USA 34-40C, 30-40D, DD, DDD, G, H, I, J, K

BLACK, DARK BLUE DENIM

UK 34-42C, 30-42D, DD, E, F, FF, G, 30-40GG, H

EU 75-95C, 65-95D, E, F, G, H, I, 65-90J, K

FR 90-110C, 80-110D, E, F, G, H, I, 80-105J, K

USA 34-42C, 30-42D, DD, DDD, G, H, I, 30-40J, K

Deep plunge neckline
Lace side sling lifts and shapes



Denim fabric
Light foam contour cups

CONTINUITY



CHARLOTTE



CHARLOTTE

6901 UNDERWIRE PADDED BRA

6917 HIGH WAIST BRIEF

Designed specifically for full busted and full figured women, this sexy yet sophisticated padded bra provides the ultimate lift and support. The 3-part cup features a side sling for the perfect shape. The powermesh back adds extra support and smoothing. With its retro shape, Charlotte's high waist brief flatters every body.

TRUE NUDE, RIO RED, BLACK

UK 34-42C, 32-42D, DD, E, F, FF, G, GG, H

EU 65-95C, 70-95D, E, F, G, H, I, J, K

FR 90-110C, 85-110D, E, F, G, H, I, J, K

USA 34-42C, 32-42D, DD, DDD, F, G, H, I, J, K

BRIEF/ ALL COLORS

S, M, L, XL, 2XL, 3XL, 4XL



Pretty bow
Smooth satin fabric with striking accents

Pretty bow
Smooth satin fabric with striking accents

Seamed foam lined padded cups

Side sling lifts and shapes

Trendy high waist brief style

Full coverage fit

CONTINUITY



DALIS



DALIS

P5641 WIRE-FREE BRALETTE

This wire-free bralette features a super soft and cozy breathable cotton-like modal fabric. Accented with a pretty lace trim, this comfy yet supportive bralette is perfect for lounging or as a sleep bra. The convertible J-hook allows for a racerback option. Especially designed for full figured and full busted women.

PEARL WHITE, BARE, CHARCOAL, BLACK, NAVY

UK 30-42D, DD, E, F, FF, G, 30-40GG, H

EU 65-95D, E, F, G, H, I, 65-90J, K

FR 80-110D, E, F, G, H, I, 80-105J, K

USA 30-42D, DD, DDD, G, H, I, 30-40J, K



CONTINUITY



DOLLY



DOLLY

P50118 LONGLINE STRAPLESS BUSTIER
P50119 LONGLINE STRAPLESS BUSTIER

Dolly is a classic wardrobe staple with a twist! Our brand new floral print and pink denim make this strapless bustier as beautiful as it is functional. This strapless bustier has silicone elastic along the neckline and top of the back, supporting smooth, light foam cups. With a full back and multiple hook and eye closure, Dolly provides ultimate support for full figured and full busted women. Adorned with pretty buttons and an elegant tuxedo bow, this strapless bustier is functional but stylish with hybrid sizing available in S-3X Plus.

BLUE DAISY, DARK BLUE DENIM

S, M, L, XL, 2X- S PLUS, M PLUS, L PLUS, XL PLUS, 2X PLUS, 3X PLUS

Strapless longline bustier

Pretty white buttons and bow

Full back with multiple hook and eye closure

Silicone elastic at the neckline and top back

Smooth light foam contour cup with dart

Daisy Print Fabric

Non-slip gripper fabric on back



CONTINUITY





ELISE

P6270 T-SHIRT BRA

A T-shirt bra that supports and flatters your bust. Neckline is slightly lower and straps are detailed with a daisy motif. The back is constructed with comfort in mind by enclosing the elastic so it is gentle against the body. The light foam contour cups are perfect for full figured and full busted women.

BLACK, BARE

UK 34-42C, 30-42D, DD, E, F, FF, G, 30-40GG, H

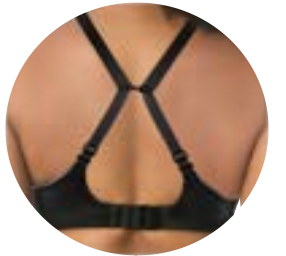
EU 75-95C, 65-95D, E, F, G, H, I, 65-90J, K

FR 90-110C, 80-110D, E, F, G, H, I, 80-105J, K

USA 34-42C, 30-42D, DD, DDD, G, H, I, 30-40J, K

Removable daisy straps can be worn in five different ways

Moderate coverage neckline



Comfort smoothing microfiber back Straps have a J hook for extra support

Seamless light foam contour cups



FASHION



ELISE



ELISE

P60915 STRAPLESS BRA

Sleek, seamless styling makes this the ultimate strapless, perfect for any occasion. Detachable, convertible daisy embossed straps make it versatile enough to style it five different ways.

BLACK, BARE, PEARL WHITE

UK 32-42C, 30-42D, DD, E, F, FF, G, 30-38GG-H

EU 70-95C, 65-95D, E, F, G, H, I, 65-85J, K

FR 85-110C, 80-110D, E, F, G, H, I, 80-100J, K

USA 32-42C, 30-42D, DD, DDD, G, H, I, 30-38J, K



Removable daisy straps can be worn in five different ways

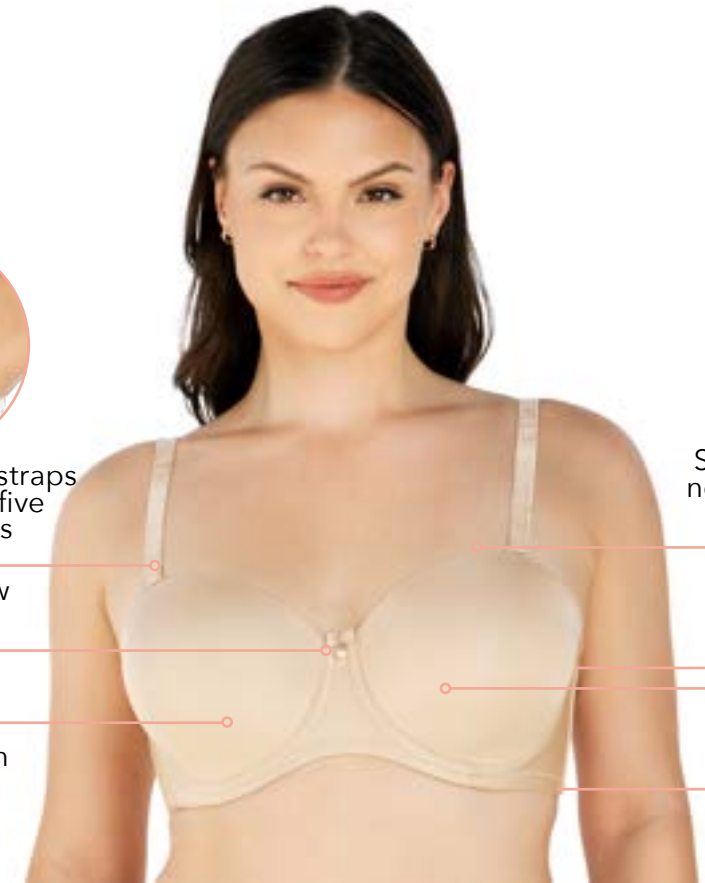
Elegant tuxedo bow with pearl charm

Seamless smooth cups

Silicone elastic at the neckline and top back

Strapless seamless Bra

Non slip gripper fabric on back



CONTINUITY





ELISE

P6097 FULL BACK LONGLINE SMOOTHING BUSTIER

Make your special day even better with Elise, the perfect full back, smooth, strapless bustier! Designed to provide the ultimate lift and support, the seamless, light foam, contour cups and strapless design with silicone elastic at the neckline and top back ensure the bust maintains lift and support under any garment. The full longline, smoothing back is designed to sculpt the body while utilizing flexible boning which provides the ultimate comfort. Elise is especially designed to be worn under bridal gowns and special occasion dresses with hybrid sizing available in S-3X plus.

BARE

S, M, L, XL, 2X- S PLUS, M PLUS, L PLUS, XL PLUS, 2X PLUS, 3X PLUS



CONTINUITY



ELISSA

ELISSA

P50116 BUSTIER

This stylish, strapless, longline bra has light foam, smooth cups. Silicone elastic at the neckline and top back keeps the cups in place. The multiple hook and eye longline back closure helps smooth and adds the ultimate support; perfect for full figured and full busted women.

Strapless seamless Bra

Full back with multiple hook and eye closure

Silicone elastic at the neckline and top back

Seamless smooth cups

Non-slip gripper fabric on back



BLACK, EUROPEAN NUDE, PEARL WHITE

UK 32-42C,D,DD,E,F,FF,G, 32-38GG,H

EU 70-95C,D,E,F,G,H,I, 70-85J,K

FR 85-110C,D,E,F,G,H,I 85-100J,K

USA 32-42C,D,DD,DDD,G,H,I, 32-38J,K

CONTINUITY





ENORA

ENORA

P5272 MINIMIZER BRA

A pretty jacquard lace design is featured in this unlined, seamed, 3-part cup minimizer. Enora's medium coverage silhouette provides the ultimate support and modesty for the full figured woman.

BLACK, EUROPEAN NUDE, SAPPHIRE

UK 34-42C, 32-42 D,DD,E,F,FF,G, 32-40 GG,H

EU 75-95C, 70-95D, E, F, G, H, I, 70-90 J,K

FR 90-110C, 85-110D, E, F, G, H, I, 85-105 J,K

USA 34-42C, 32-42D, DD, DDD, G, H, I, 32-40 J,K



Pretty jacquard
lace smooth
fabric

Minimizer
provides modesty
and support

Unlined seamed
3-part
underwire cup

CONTINUITY





ERIKA

ERIKA

P58611 SEAMLESS WIRE-FREE NURSING BRA

The seamless wire-free design looks and feels smooth under clothing, perfect for moms on the go. The circular inner sling adds support while the nursing clips unhook with one hand for nursing. The microfiber cup and back with enclosed bottom band elastic adds the ultimate comfort. Modern decorative lacing highlights the center front.

BLACK, BARE

UK 32-42D,DD,E,FFF,G, 32-40GG, H

EU 70-95D,DD,DDD,G,H,I, 70-90J,K

FR 85-110D,DD,DDD,G,H,I, 85-105J,K

USA 32-42D,DD,DDD,G,H,I, 32-40J,K

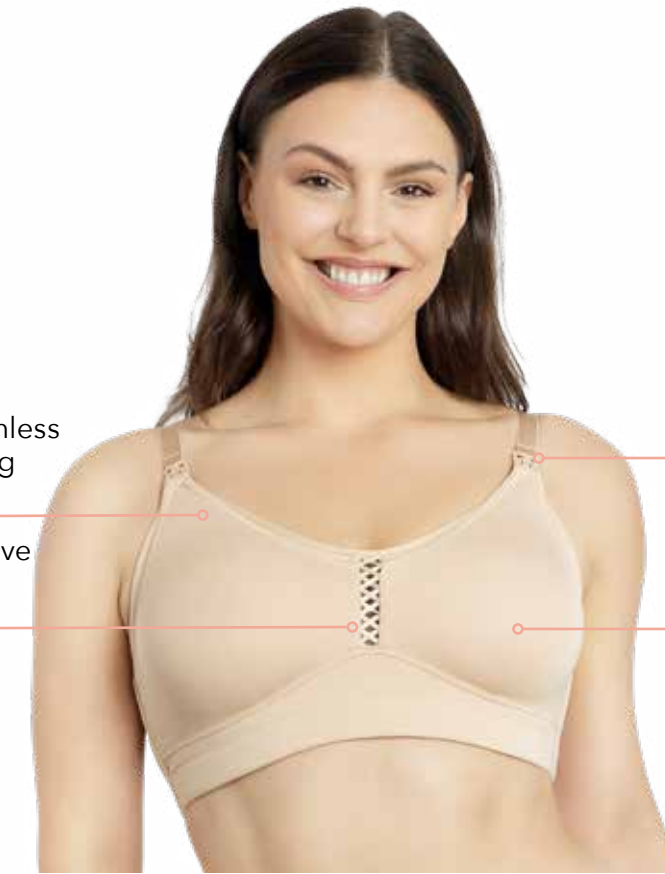
Smooth and seamless under clothing

Modern decorative lacing



Sturdy snap unhooks with one hand

Inner sling for comfortable support while nursing



CONTINUITY





ERIKA

P58622 UNLINED MOLDED BRA

This everyday T-shirt bra is a staple in every wardrobe. The seamless full coverage, double lined wired cups flatter your bust while feeling comfortable. The extra padded straps and inner side slings provide the ultimate comfort and support.

BLACK, BARE

UK 32-40C,D,DD,E,FF,G, GG, H

EU 70-90C,D,DD,DDD,G,H,I,J,K

FR 85-105C,D,DD,DDD,G,H,I,J,K

USA 32-40C,D,DD,DDD,G,H,I,J,K

ERIKA

Padded comfort straps

Smooth and seamless under clothing

Double lined wired seamless cups

Inner sling for fit and support



CONTINUITY



MARISSA



MARISSA

P50117 LONGLINE STRAPLESS BRA

Marissa is a classic wardrobe staple with a twist! Our elegant black Mosaic print makes this strapless bra as beautiful as it is functional. This strapless longline bra has silicone elastic along the neckline and top of the back, supporting smooth, light foam cups. With a full back and multiple hook and eye closure, Marissa provides ultimate support for full figured and full busted women. Adorned with pretty black buttons and an elegant tuxedo bow, this strapless bra is functional but stylish.

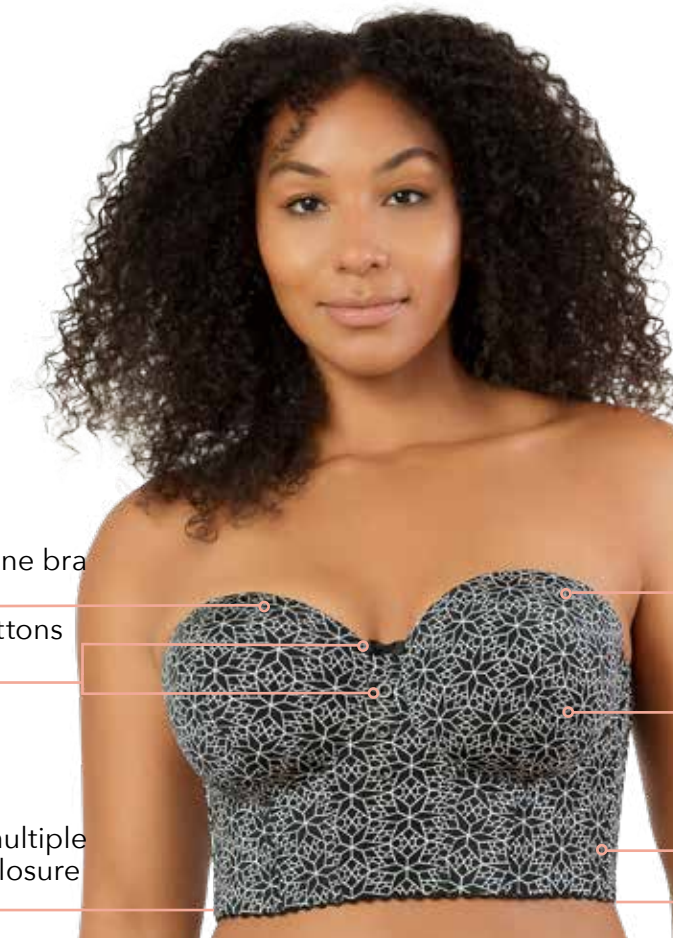
BLACK MOSAIC

UK 32-42C, 30-42D,DD,E,FF,G, 30-38GG-H

EU 70-95C, 65-95D,E,F,G,H,I, 65-85J,K

FR 85-110C, 80-110D,E,F,G,H,I 80-100J,K

USA 32-42C, 30-42D,DD,DDD,G,H,I, 30-38J,K



Strapless longline bra

Pretty white buttons and bow

Full back with multiple hook and eye closure

Silicone elastic at the neckline and top back

Smooth light foam contour cup with dart

Modern mosaic print for an elegant look

Non-slip gripper fabric on back

CONTINUITY





MIA DAISY

MIA DAISY

P6142 WIRE-FREE PADDED LACE BRALETTE

Our on trend Daisy Wire Free Lace Bralette-the perfect blend of sweet meets sexy, featuring eyelet daisy lace and embroidered straps. A must have for your inner wear outerwear bra wardrobe for all full busted and full figured women. Based on our Mia Longline Bra silhouette, Daisy includes removable and reversible lightly padded cups for versatility of support and color. The longline back helps smooth and add support while front strapping adds a sexy look and feel. Inclusive sizing available.

PEARL WHITE
S, M, L, XL, 2X- S PLUS, M PLUS, L PLUS, XL PLUS, 2X PLUS, 3X PLUS

Front strapping adds sexy feel

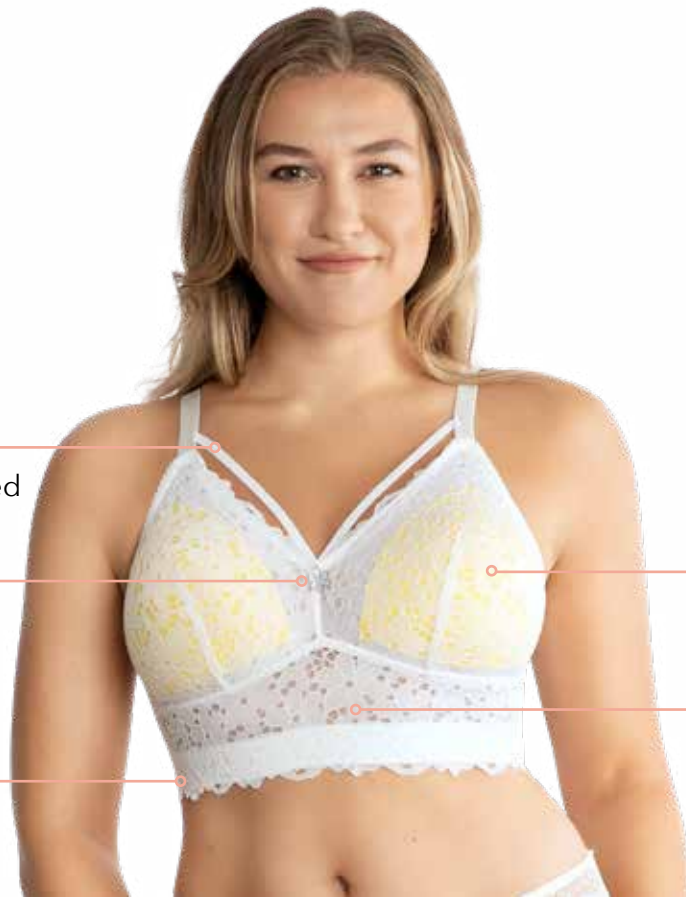
Daisy embroidered straps and daisy charm

Longline back helps smooth and add support



Removable, reversible, lightly padded foam cups

Feminine eyelet daisy lace fabric



CONTINUITY



MIA DOT BRALETTE



MIA DOT

P6011 WIRE-FREE PADDED MESH BRALETTE

This mesh dot lace, wire-free bralette features removable/reversible lightly padded foam cups for versatility of look and support. The front straps add a sexy feel while the multiple hook and eye longline back closure helps smooth and add support. The stretch lace trim at the neckline and band provide ease of fit.

CAMEO ROSE, BLACK

UK 30-42C,D,DD,E,FF,G, 30-40 GG,H

EU 65-95C,D,DD,DDD,G,H,I, 65-90J,K

FR 80-110C,D,DD,DDD,G,H,I, 80-105J,K

USA 30-42C,D,DD,DDD,G,H,I, 30-40J,K

BLACKBERRY

UK 30-40C,D,DD,E,FF,G,GG,H

EU 65-90C,D,DD,DDD,G,H,I,J,K

FR 80-105C,D,DD,DDD,G,H,I,J,K

USA 30-40C,D,DD,DDD,G,H,I, J,K

Front strapping adds sexy feel

Stretch lace trim at neckline

Longline back helps smooth and add support

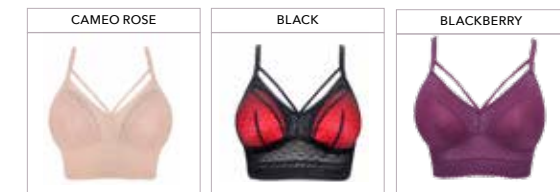


Removable, reversible, lightly padded foam cups

Dot mesh lace lined cups



CONTINUITY



MIA DOT BODYSUIT



MIA DOT

P6017 WIRE-FREE PADDED MESH BODYSUIT

The perfect bodysuit for every body! Our Mia Dot bodysuit features wire free, lightly padded foam cups that are removable and reversible for a versatile look. The thong back provides a sexy look with no panty lines. Front straps add a sexy feel while the multiple hook and eye longline back closure helps smooth and add support. The stretch lace trim at the neckline, waist and panty provide ease of fit.

CAMEO ROSE, BLACK

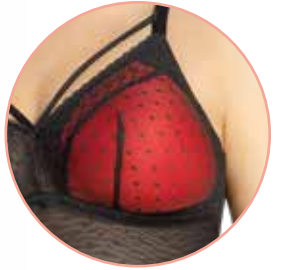
S, M, L, XL, 2X- S PLUS, M PLUS, L PLUS, XL PLUS, 2X PLUS, 3X PLUS

Front strapping adds sexy feel

Stretch lace trim at neckline

Longline back helps smooth and add support

Stretch lace trim at waist and panty



Removable, reversible, lightly padded foam cups

Dot mesh lace lined cups

Sexy V-Back with convertible thong



CONTINUITY





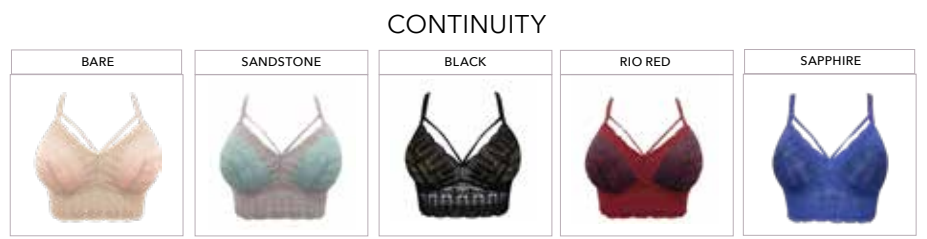
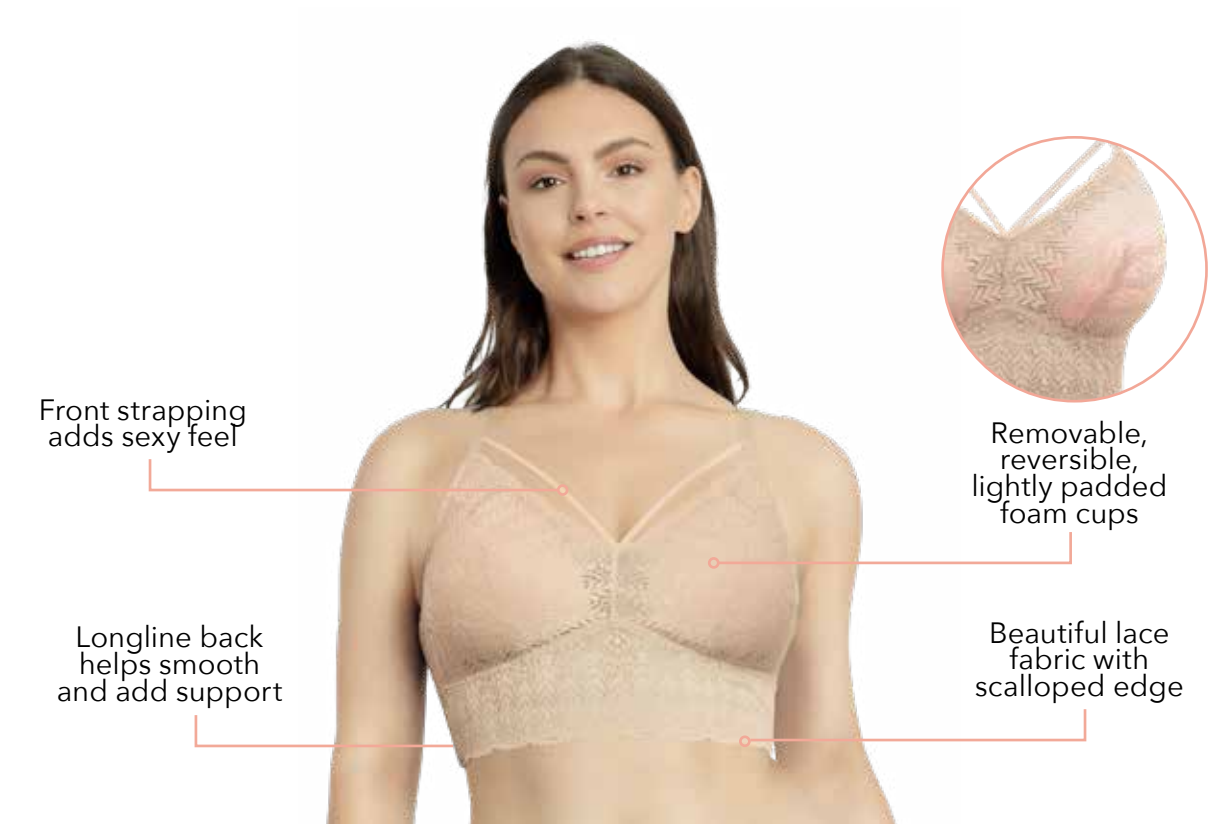
MIA LACE

P5951 WIRE-FREE PADDED LACE BRALETTE

This sexy and beautiful wire-free bralette is perfect for all full busted and full figured women. Bralette includes removable and reversible cups that are lightly padded. The longline back helps smooth and add support while front strapping adds a sexy look and feel.

- BARE, BLACK**
- UK 30-42C,D,DD,E,F,FF,G, 30-40GG,H
- EU 65-95C,D,E,F,G,H,I, 65-90J,K
- FR 80-110C,D,E,F,G,H,I,80-105J,K
- USA 30-42C,D,DD,DDD,G,H,I, 30-40J,K
- SANDSTONE, RIO RED, SAPPHIRE**
- UK 30-40C,D,DD,E,F,FF,G,GG,H
- EU 65-90C,D,E,F,G,H,I,J,K
- FR 80-105C,D,E,F,G,H,I,J,K
- USA 30-40C,D,DD,DDD,G,H,I,J,K

MIA LACE



MIA LACE CHEMISE



MIA LACE

P5959 CHEMISE

Our newest addition to the Mia Lace Collection, this beautiful wire-free chemise features a longline bralette design for support with removable and reversible lightly padded foam cups for a versatile look. The front strapping adds a sexy feel. The skirt is soft sheer mesh with a split teardrop styling in the front and delicate lace edge at the hem. The back has a deep, plunge lace trimmed peek-a-boo V-keyhole.

PEARL WHITE, BLACK

S, M, L, XL, 2X- S PLUS, M PLUS, L PLUS, XL PLUS, 2X PLUS, 3X PLUS

Front strapping adds sexy feel

Beautiful lace fabric with scalloped edge



Removable/ reversible, lightly padded foam cups

Longline band helps smooth and support

Mesh teardrop shape front skirt



CONTINUITY



PEARL



PEARL

P60921 NON-PADDED SEAMLESS MINIMIZER BRA

Featuring a beautiful jacquard design fabric that brings elegance to seamless. Smooth, double lined molded cups with internal side slings minimizes bust up to one cup size. Microfiber center front and back enhances the ultimate comfort of this gorgeous style.

CAMEO ROSE, BLACK

UK 32-42C, 30-40D, DD, E, F, FF, G, GG, H, 42D, DD, E, F, FF, G

EU 70-95C, 65-95D, DD, DDD, G, H, I, 65-90J, K

FR 85-110C, 80-110D, DD, DDD, G, H, I, 80-105J, K

USA 32-404C, 30-42D, DD, DDD, G, H, I, 30-40J, K

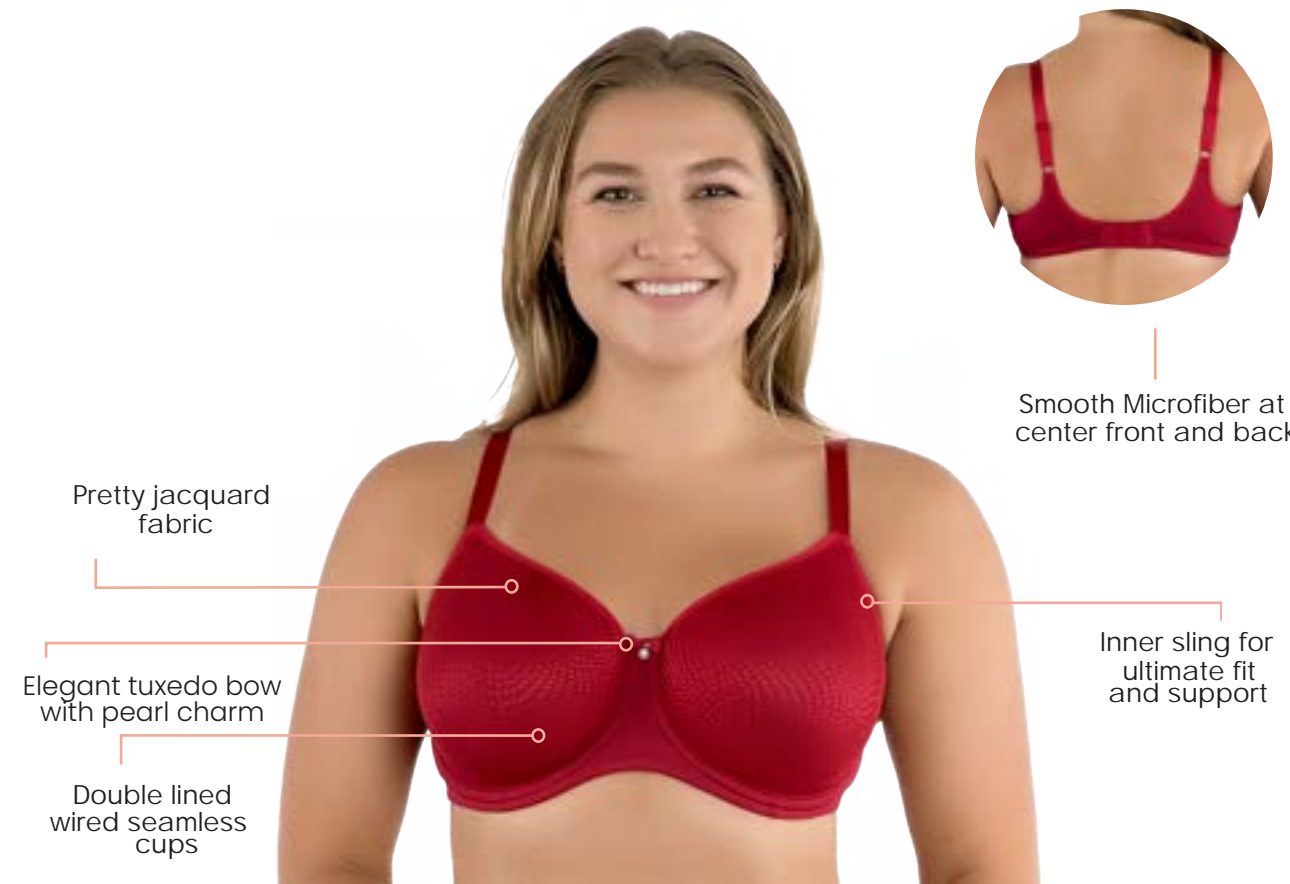
RIO RED

UK 30-42D, DD, E, F, FF, G, 30-40GG, H

EU 65-95D, E, F, G, H, I, 65-90J, K

FR 80-110D, E, F, G, H, I, 80-105J, K

USA 30-42D, DD, DDD, G, H, I, 30-40J, K



Pretty jacquard fabric

Elegant tuxedo bow with pearl charm

Double lined wired seamless cups

Smooth Microfiber at center front and back

Inner sling for ultimate fit and support

CONTINUITY



FASHION



NEW COLOR

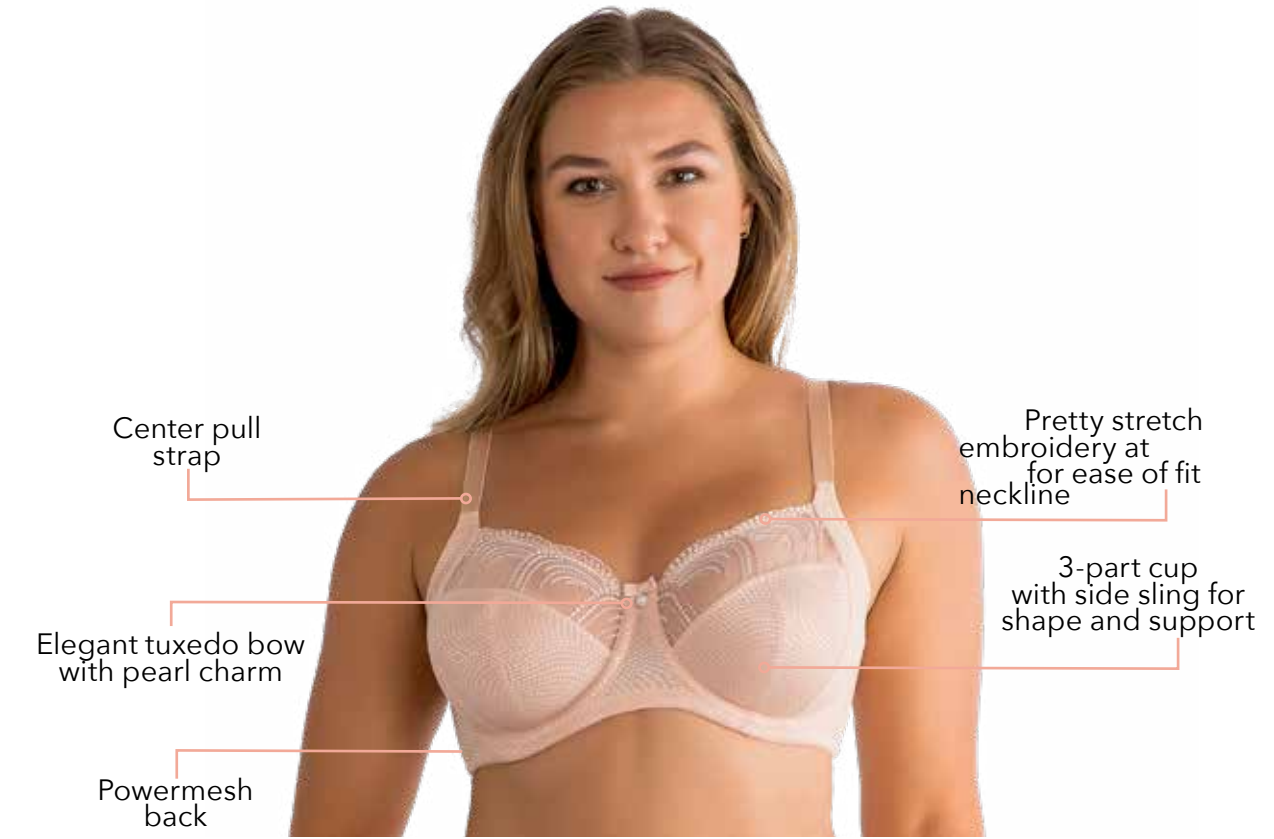
PEARL



PEARL

P60923 UNLINED BRA

Elegant and stunning, our new Pearl Unlined Bra has a 3-part cup with side sling for shape and support, and pretty stretch embroidery at the neckline for ease of fit. The powermesh back provides seamless comfort and support. Pearl's sophisticated tuxedo bow and pearl charm are the eye-catching main feature of this unlined bra.



CAMEO ROSE, BLACK

UK 34-42C, 32-42D, DD, E, F, FF, G, 30-40GG, H

EU 75-95C, 70-95D,E,F,G,H,I, 65-90J,K

FR 90-110C, 85-110D,E,F,G,H,I, 80-105J,K

USA 34-42 C, 32-42D, DD, DDD, G, H, I, 30-40J, K

CONTINUITY





PEARL

P6091 LONGLINE PLUNGE BRA

With its gorgeous, eye-catching pearl embroidery, Pearl is just as supportive as it is beautiful. The sexy, deep plunge neckline and smooth, seamless, light foam, contour cups provide great lift to even the fullest bust. The fashionable longline band with a powermesh back helps smooth and support.

- CAMEO ROSE, BLACK**
- UK 32-40C,D, DD, E, F, FF, G,GG, H
 - EU 70-90C,D,DD,DDD,G,H,I,J,K
 - FR 85-105C,D,DD,DDD,G,H,I,J,K
 - USA 32-40C,D,DD,DDD,G,H,I,J,K

PEARL



Deep plunge neckline

Longline band helps smooth and support

Seamless light foam smooth cups

Pearl lace side sling lifts and shapes

CONTINUITY



SHEA



SHEA

P6062 PLUNGE UNLINED BRA

As soft and luxurious as shea butter, our Shea plunge bra's sheer, breathable fabric conforms to your body like a second skin. The silhouette features a 3-part underwire cup with external and internal side sling for extra support. The comfort striped stretch mesh at the side, back and neckline provides ease of fit. A decorative lacing adorns the center front and accentuates the modern plunge neckline.

BARE, BLACK, SILVER

UK 34-42C, 30-42D, DD, E, F, FF, G, 30-40GG, H

EU 75-95C, 65-95D, E, F, G, H, I, 65-90J, K

FR 90-110C, 80-110D, E, F, G, H, I, 80-105J, K

USA 34-42C, 30-42D, DD, DDD, G, H, I, 30-40J, K

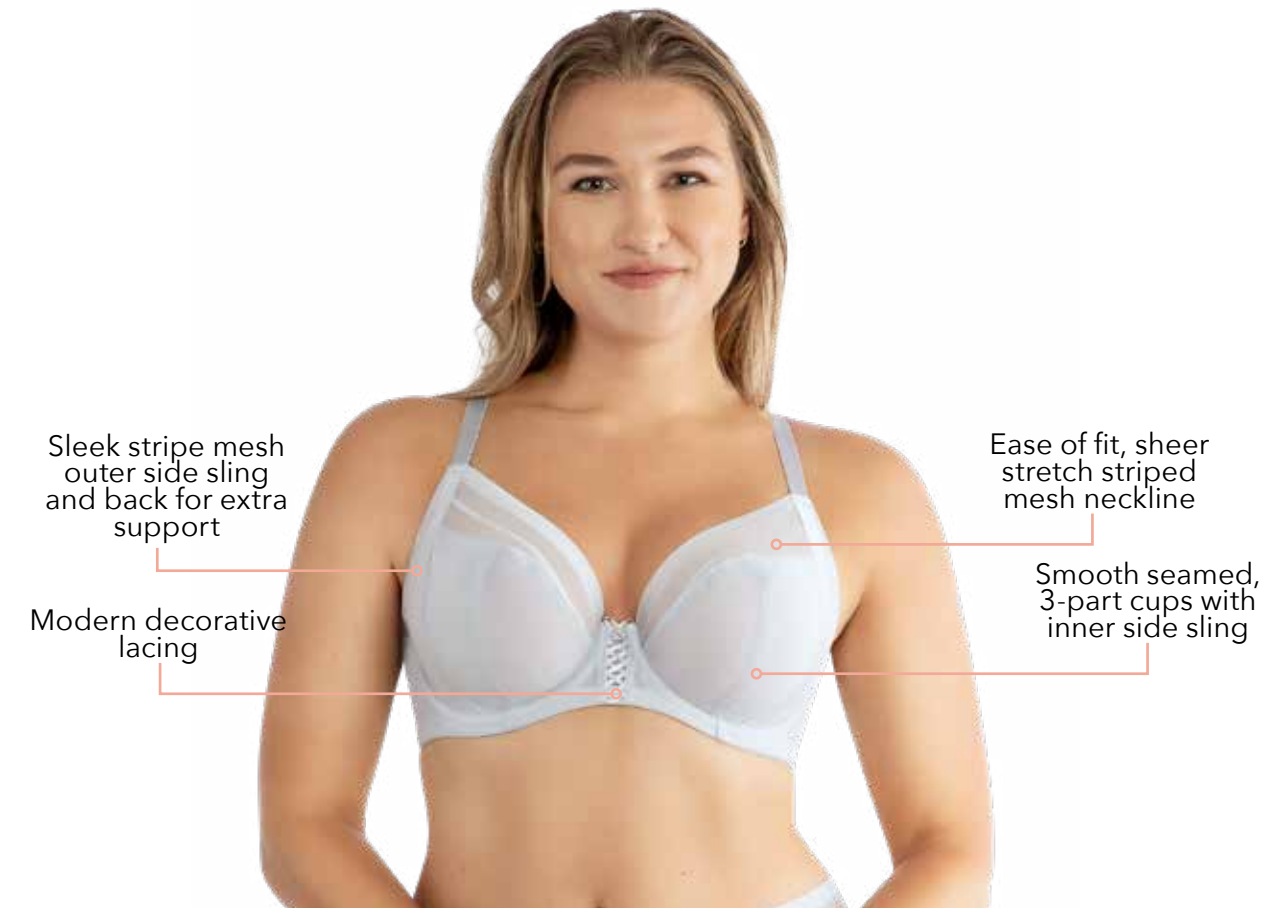
RACING RED, BLACKBERRY, PETAL PINK

UK 30-40D, DD, E, F, FF, G, GG, H

EU 65-90D, E, F, G, H, I, J, K

FR 80-105D, E, F, G, H, I, J, K

USA 30-40D, DD, DDD, G, H, I, J, K





SHEA

SHEA

P6061 SPACER T-SHIRT BRA

Inspired by our second-skin unlined Shea bra, our Shea Spacer T-Shirt Bra is the perfect every-day staple for the full busted or full figured woman. Shea's breathable, lightweight cups are supportive and appear seamless, elegant and stunning.

BARE, BLACK, PETAL PINK

UK 34-42C, 30-42D,DD,E,F,FF,G, 30-40GG,H

EU 75-95C, 65-95D,E,F,G,H,I, 65-90J,K

FR 90-110C, 80-110D,E,F,G,H,I, 80-105J,K

USA 34-42C, 30-42D,DD,DDD, G, H, I, 30-40J, K

Side sling lifts and shapes
Modern decorative lacing

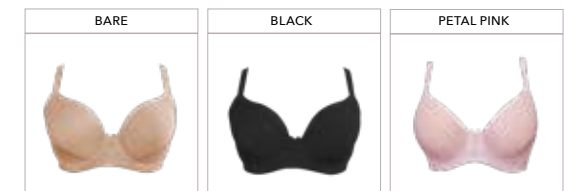


Breathable, lightweight innovative spacer technology cup

Smooth seamless contour cups

Comfort microfiber back

CONTINUITY





SHEA

SHEA

P60631 HIGH WAIST SLIMMER BRIEF

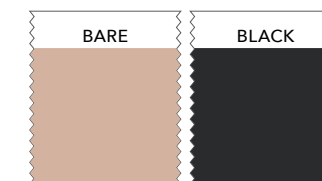
Using advanced bonded seam technology makes this shaper brief fits like a second skin. Breathable sheer stripe mesh with light tummy and back control panels provides a smooth shape and sleek design under clothing. High waist full coverage brief shape slims the body all the way up to the bra.

BARE, BLACK

S, M, L, XL, 2XL, 3XL



CONTINUITY



SHEA



SHEA

P60671 LONGLINE STRAPLESS BRA

Our new Shea Longline Strapless Bra has the smooth qualities of shea butter and the slip-proof support of a full bustier. Designed with silicone elastic at the neckline, full back with multiple hook & eye closure, and non-slip gripper fabric on the back, this strapless bra provides the ultimate support. Shea's seamless smooth cups are accented by decorative, modern lacing in the center making this an eye-catching, trendy wardrobe staple.

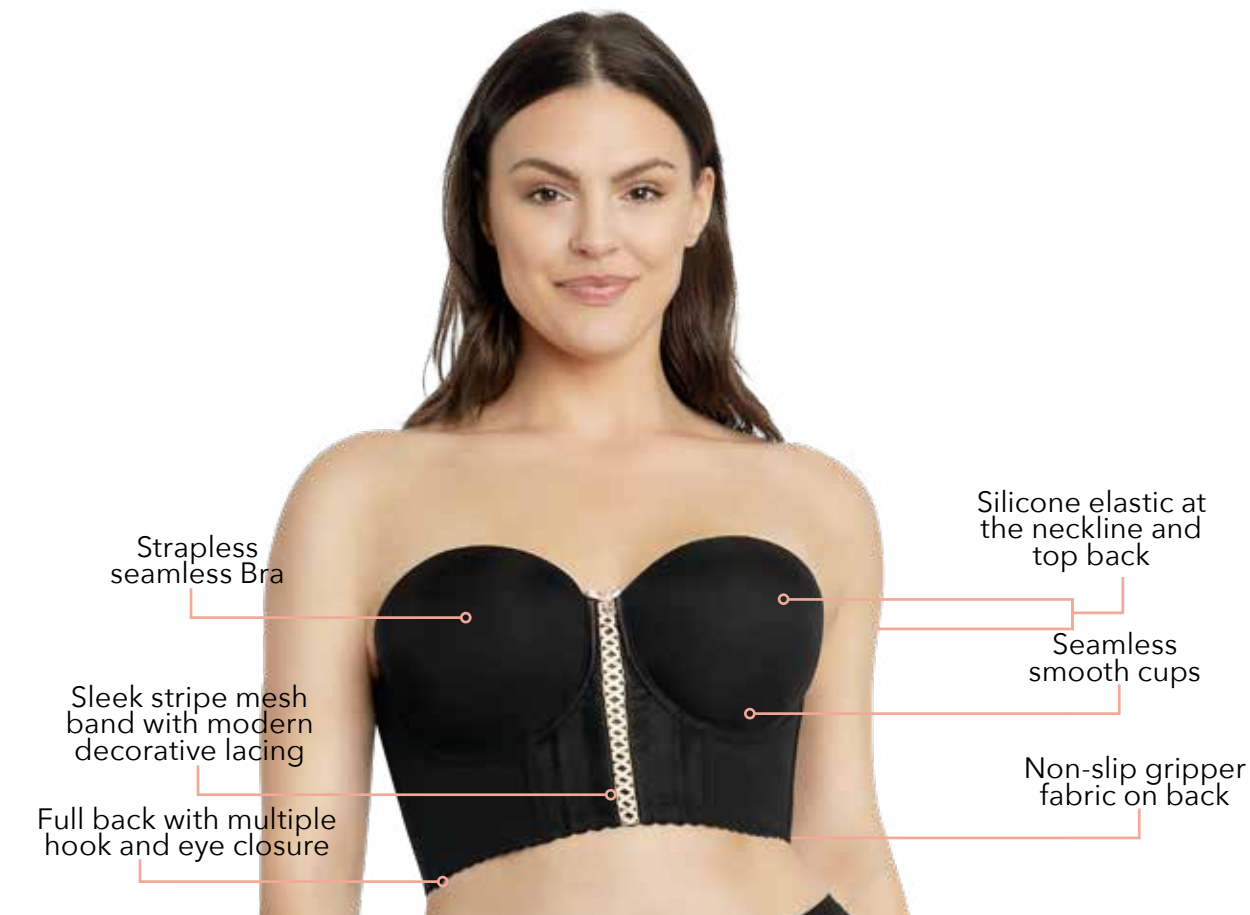
RACING RED, BLACK

UK 32-42C, 30-42D, DD, E, F, FF, G, 30-38 GG, H

EU 70-95C, 65-95D,E,F,G,H,I, 65-85J,K

FR 85-110C, 80-110D,E,F,G,H,I, 80-100J,K

USA 32-42C, 30-42D,DD,DDD,G,H,I, 30-38J,K



CONTINUITY



STEVIE



STEVIE

P50120 LONGLINE STRAPLESS BUSTIER

Stevie is a chic, stylish, sexy, strapless longline bustier inspired by leather and lace. The on-trend faux leather is accented with our beautiful, scalloped Mia Lace combined with edgy lacing, making this innovative new style an eye-catching, must-have wardrobe staple. Designed with the same fit features as our best-selling Elissa Bustier with silicone elastic at the neckline, full back with multiple hook & eye closure, and non-slip gripper fabric on the back providing the ultimate strapless support, especially for full figured and full busted women. Get the look with Stevie -- available in size inclusive hybrid sizing S-3X Plus, offering the perfect fit for every body.

BLACK FAUX LEATHER

S, M, L, XL, 2X- S PLUS, M PLUS, L PLUS, XL PLUS, 2X PLUS, 3X PLUS



Silicone elastic at the neckline and top back

Edgy, modern decorative lacing

Full back with multiple hook and eye closure



Strapless longline bustier with removable/convertible straps

Trendy faux leather and beautiful scalloped lace seamed outer cup

Smooth seamless inner light foam contour cup

Non-slip gripper fabric on back

CONTINUITY

BLACK FAUX LEATHER



STEVIE



STEVIE

P50125 UNLINED WIRED BRA

A sexy version of our best seller Shea uses faux leather to give you that edgy look. Shea plunge bra's sheer, breathable fabric conforms to your neckline like a second skin. The silhouette features a 3-part underwire cup with external and internal side sling for extra support. The comfort striped stretch mesh at the side, back and neckline provides ease of fit. A decorative lacing adorns the center front and accentuates the modern plunge neckline.

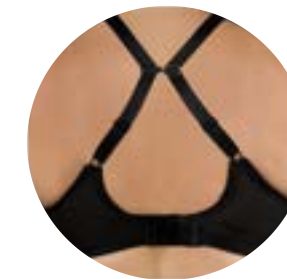
BLACK FAUX LEATHER

UK 30-42D, DD, E, F, FF, G, 30-40GG, H

EU 65-95D, E, F, G, H, I, 65-90J, K

FR 80-110D, E, F, G, H, I, 80-105J, K

USA 30-42D, DD, DDD, G, H, I, 30-40J, K



J hook on backstrap for extra support

Ease of fit, sheer stretch striped mesh neckline

Smooth seamed, 3-part cup with inner side sling



Sleek stripe mesh outer side sling and back for extra support

Trendy and elegant faux leather fabric cups

FASHION

BLACK FAUX LEATHER



LEILA



LEILA

NB502 NURSING BRA

This comfortable, unlined and wired nursing bra has many special features. It's seamless cup design makes it super smooth under clothing, perfect for new mothers on the go. The circular inner sling gives the bust ongoing support while the sturdy snap easily unhooks with one hand while nursing. The adjustable straps are padded for additional comfort and support.

BARE, BLACK

UK 34-44C, 32-44D, DD, E, F, FF, G, 32-40GG, H

EU 75-100C, 70-100D, E, F, G, H, I, 70-90J, K

FR 90-115C, 85-115D, E, F, G, H, I, 85-105J, K

USA 34-44C, 32-44D, DD, DDD, G, H, I, 32-40J, K

Padded straps
for extra
comfort

Smooth and
seamless under
clothing

Soft scalloped
lace trim



Sturdy snap
unhooks
with one hand

Pocket insert
for nursing
disk



CONTINUITY

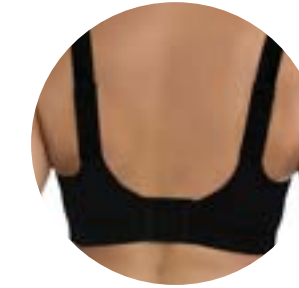




ACTIVE

P62121 WIRE-FREE ACTIVE BRA

Active bra for low to mid impact sports, exercise and workout. Made of breathable fabric for comfortable daily wear and workout; Wire-free, sports bra with firm support and bounce control for active sports. The moisture wicking, cooling, and antibacterial fabric in the band keeps you comfortable while exercising or for your daily athleisure activities. The cups have an inner slings to provide shape and support. Wide, comfort adjustable ladder straps ensure the perfect fit.



Wide adjustable straps that can be crossed over for extra support



Firm support cup with inner sling to prevent bounce when exercising

Foam padded hook and eye

Moisture wicking, anti bacterial band provides extra comfort

BLACK , BARE

UK 30-40D,DD,E,F,FF,G,GG,H

EU 65-90D, E, F, G, H, I, J, K

FR 80-105D, E, F, G, H, I, J, K

USA 30-40D, DD,DDD, G, H, I, J, K

FASHION





DYNAMIC

DYNAMIC

P5541 PADDED PERFORMANCE SPORTS BRA

Workout in style in this wired sports bra, perfect for medium to high impact sports. The moisture wicking, breathable, full coverage foam cups help draw away moisture from the body to keep you dry and comfortable while working out. The back is adjustable to wear in a cross style, perfect for full busted and full figured women.

BLACK

UK 34-44C, 30-44D, DD, E, F, FF, G

EU 75-100C, 65-100D, E, F, G, H, I

FR 90-115C, 80-115D, E, F, G, H, I,

USA 34-44C, 30-44D, DD, DDD, G, H, I

Moisture wicking fabric



Adjustable straps can be worn in cross style

Full coverage, perforated, breathable foam cups

CONTINUITY

BLACK





WAVE

WAVE

P6052 FRONT ZIPPER SPORTS BRA

Introducing Wave, our new, wire-free, sports bra with a sporty zipper front and internal hooks for ease of fit. The moisture wicking, cooling, and antibacterial fabric offers the ultimate comfort while exercising. The lightly padded inner slings along with a wide elastic band provide comfort, shape, and support. Subtle, tonal wave patterned front fabric trimmed with contrast, cooling, and perforated performance mesh, add fashion flare to any workout. The extra mesh cross back support lining helps smooth and lessens stress on the shoulders. Wide, comfort adjustable ladder straps ladder straps ensure the perfect fit.

NAUTICAL BLUE, BLACK

UK 32-40C,D,DD,E,F,FF,G,GG,H

EU 70-90C,D,DD,DDD,G,H,I,J,K

FR 85-105C,D,DD,DDD,G,H,I,J,K

USA 32-40C,D,DD,DDD,G,H,I,J,K



CONTINUITY



PANTIES



MICRO DRESSY

MICRO DRESSY

PP306 FRENCH CUT

Sexy yet providing full coverage, our French Cut Micro Dressy panty is the perfect match for gorgeous bras Adriana, Charlotte Lace, Elise, Mia Dot, Mia Lace, Paige, Pearl & Rain.

S, M, L, XL, 2XL, 3XL

Covered wide elastic waistband prevents roll down

Sexy sheer mesh side panels

Lux microfiber with pretty lace picot trim

High waist and leg slims body and beautifully elongates legs

Full coverage front and back with minimal leg ride up



CONTINUITY



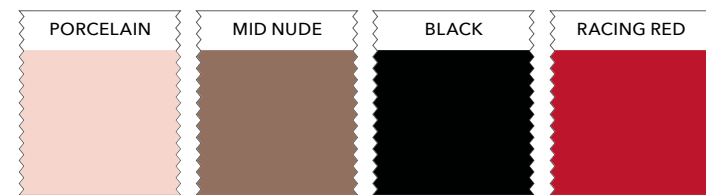
BONDED

PP5031 FRENCH CUT

For the ultimate body-smooth look and feel, the Bonded French Cut is the perfect match for seamless T-shirt bras Aline, Casey, Dynamic, Elissa, Erika, Jeanie and Wave.



CONTINUITY



S, M, L, XL, 2XL, 3XL

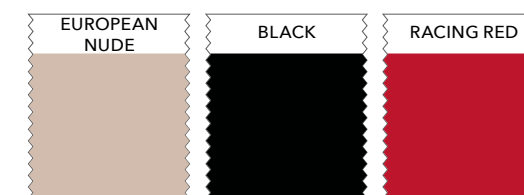
BONDED

PP505 HIPSTER

For the ultimate body-smooth look and feel, the Bonded Hipster is the perfect match for seamless T-shirt bras Aline, Casey, Dynamic, Elissa, Erika, Jeanie and Wave.



CONTINUITY



S, M, L, XL, 2XL, 3XL

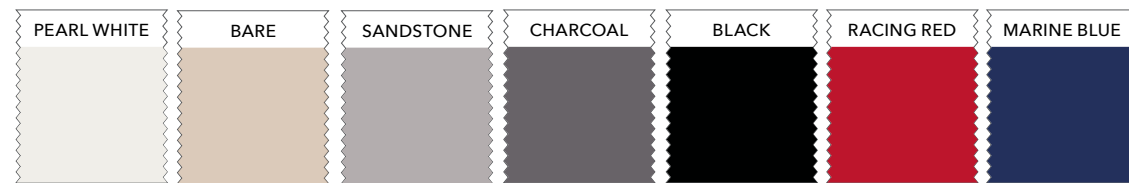
COZY

PP504 HIPSTER

The name says it all! The Cozy Hipster makes you want to cuddle up and relax in Dalis and Shea. It also pairs well with bras like Adriana, Emma, Enora, Erika and Leila.



CONTINUITY



S, M, L, XL, 2XL, 3XL

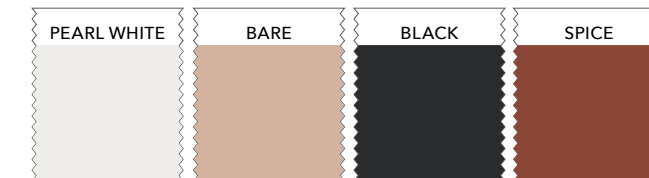
COZY

PP5032 BRIEF

The name says it all! The Cozy Brief makes you want to cuddle up and relax in Dalis and Shea. It also pairs well with bras like Adriana, Emma, Enora, Erika and Leila.



CONTINUITY

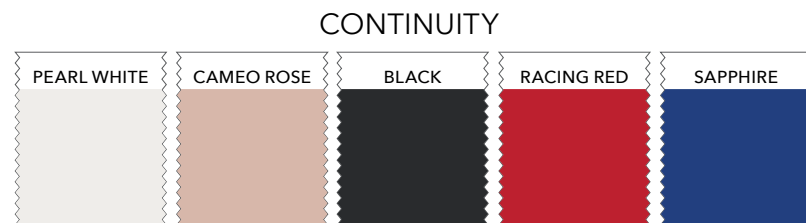


S, M, L, XL, 2XL, 3XL

MIA

P5955 HIPSTER

This highly-requested new style pairs with our best selling Mia Dot Bralette and Mia Lace Bralette & Chemise. With medium coverage and minimal leg ride-up, our Mia Hipster has dot mesh at the front and back, lace at the side and mesh at the center front. To match our bralettes and chemise, this panty has cross straps at the back to add a sexy feel.

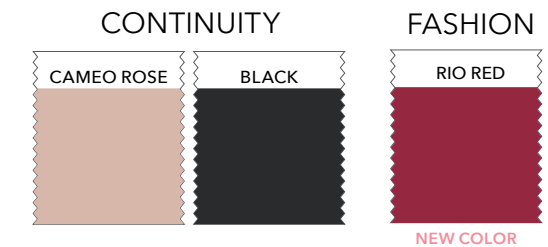


S, M, L, XL, 2XL, 3XL

PEARL

P6093 FRENCH CUT

This full coverage high waist and high leg French cut panty slims and elongates. With elegant, rich embroidery at the side and tuxedo bow with pearl charm, this is the perfect match for our Pearl Longline Plunge Bra and Pearl Unlined Bra.



S, M, L, XL, 2XL, 3XL

STEVIE

P50124 HIGH WAIST THONG

This high waist thong with generous side length works for every figure. Breathable mesh on the front with the side panels of faux leather and lacing trim make it both sexy and comfortable to wear. Matches well with the Stevie bra and bustier.



FASHION



S, M, L, XL, 2XL, 3XL

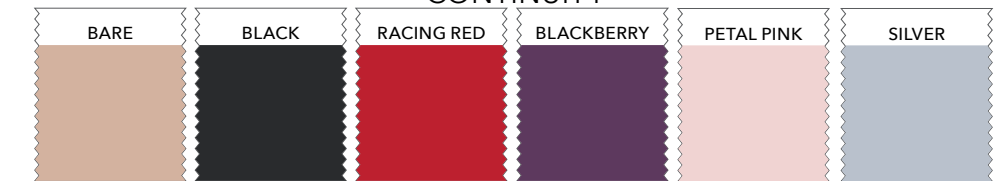
SHEA

P60632 BRIEF

Pairing perfectly with our Shea Unlined Bra, Spacer Bra and Strapless Bra, this brief has sheer stripe mesh at the side and back that lays perfectly flat. This full coverage brief features modern decorative lacing at the front seam for a sexy feel.



CONTINUITY



S, M, L, XL, 2XL, 3XL

INDEX

Adele

P61321 UNLINED WIRED BRA
BARE | BLACK STRIPE



PP505 BONDED
30-42D, DD, E, F, FF, G, 30-40GG, H
S, M, L, XL, 2XL, 3XL

Casey

2801 PLUNGE MOLDED T-SHIRT BRA
EUROPEAN NUDE | BLACK | BLACK W/ROSE PRINT



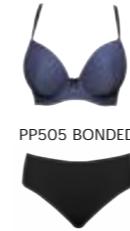
PP505 BONDED
EUROPEAN NUDE, BLACK W/ROSE PRINT:
34-40C, 30-40D, DD, E, F, FF, G, GG, H
BLACK: 34-42C, 30-42D, DD, E, F, FF, G, 30-40GG, H
S, M, L, XL, 2XL, 3XL

28013 PLUNGE
MOLDED T-SHIRT BRA
BLACK MOSAIC



PP505 BONDED
34-40C, 30-40D, DD, E,
F, FF, G, GG, H
S, M, L, XL, 2XL, 3XL

28012 PLUNGE
MOLDED T-SHIRT BRA
DARK BLUE DENIM



PP505 BONDED
34-42C, 30-42D, DD, E, F, FF, G,
30-40GG, H
S, M, L, XL, 2XL, 3XL

Dalis

P5641 WIRE-FREE BRALETTE
PEARL WHITE | BARE | CHARCOAL | BLACK | NAVY



PP504 COZY / PP5032 COZY
30-42D, DD, E, F, FF, G, 30-40GG, H
S, M, L, XL, 2XL, 3XL

Elise

P6097 FULL BACK LONGLINE
SMOOTHING BUSTIER
BARE



PP5032 COZY
S, M, L, XL, 2X-S PLUS, M PLUS, XL PLUS,
2X PLUS, 3X PLUS
S, M, L, XL, 2XL, 3XL

P60915 STRAPLESS BRA
PEARL WHITE | BARE | BLACK



PP5032 COZY
32-42C, 30-42D, DD, E, F, FF, G, 30-38GG, H
S, M, L, XL, 2XL, 3XL

Adriana

P5482 WIRE-FREE LACE BRALETTE
PEARL WHITE | BARE | BLACK | RACING RED | SAPPHIRE | PETAL PINK



PP306 MICRO DRESSY/PP5032 COZY/P5955 MIA HIPSTER/P60632 SHEA BRIEF
PEARL WHITE, BARE, BLACK, RACING RED: 30-42D, DD, E, F, FF, G, 30-40GG, H
PETAL PINK: 32E, F, 34-38D, DD, E, F, FF, G, GG, H
SAPPHIRE: 30-40D, DD, E, F, FF, G, GG, H
S, M, L, XL, 2XL, 3XL

Charlotte

6901 UNDERWIRE PADDED BRA
TRUE NUDE | RIO RED | BLACK



6917 HIGH WAIST BRIEF
34-42C, 32-42D, DD, E, F, FF, G, GG, H
S, M, L, XL, 2XL, 3XL, 4XL

Dolly

P50119 LONGLINE STRAPLESS BUSTIER
BLUE DAISY



PP504 COZY
S, M, L, XL, 2X-S Plus, M Plus, L Plus, XL Plus,
2X Plus, 3X Plus
S, M, L, XL, 2XL, 3XL

P50118 LONGLINE STRAPLESS BUSTIER
DARK BLUE DENIM



PP504 COZY
S, M, L, XL, 2X-S Plus, M Plus, L Plus, XL Plus,
2X Plus, 3X Plus
S, M, L, XL, 2XL, 3XL

P6270 T-SHIRT BRA
BLACK | BARE



PP5032 COZY
34-42C, 30-42D, DD, E, F, FF, G, 30-40GG, H
S, M, L, XL, 2XL, 3XL

Elissa

P50116 BUSTIER
PEARL WHITE | EUROPEAN NUDE | BLACK



PP306 MICRO DRESSY / PP5031 BONDED



32-42C, D, DD, E, F, FF, G, 32-38GG, H
S, M, L, XL, 2XL, 3XL

Enora

P5272 MINIMIZER BRA
EUROPEAN NUDE | BLACK | SAPPHIRE



PP504 COZY / PP505 BONDED / P5955 MIA HIPSTER



34-42C, 32-42D, DD, E, F, FF, G, 32-40GG, H
S, M, L, XL, 2XL, 3XL

Marissa

P50117 LONGLINE STRAPLESS BRA
BLACK MOSAIC



PP504 COZY



32-42C, 30-38D, DD, E, F, FF, G, GG, H, 40-42D, DD, E, F, FF, G
S, M, L, XL, 2XL, 3XL

Mia Daisy

P6142 WIRE-FREE PADDED LACE BRALETTE
PEARL WHITE



P5955 MIA HIPSTER



S, M, L, XL, 2X-S PLUS, M PLUS, L PLUS, XL PLUS, 2X PLUS, 3X PLUS
S, M, L, XL, 2XL, 3XL

Mia Dot

P6011 WIRE-FREE PADDED MESH BRALETTE
CAMEO ROSE | BLACK | BLACKBERRY



P5955 MIA HIPSTER / P60632 SHEA BRIEF



CAMEO ROSE, BLACK: 30-42C, D, DD, E, F, FF, G, 30-40GG, H
BLACKBERRY: 30-40C, D, DD, E, F, FF, G, GG, H
S, M, L, XL, 2XL, 3XL

P6017 WIRE-FREE PADDED MESH BODYSUIT
CAMEO ROSE | BLACK



S, M, L, XL, 2X- S PLUS, M PLUS, L PLUS, XL PLUS, 2X PLUS, 3X PLUS

Erika

P58611 SEAMLESS WIRE-FREE NURSING BRA
BLACK | BARE



PP504 COZY



32-40D, DD, E, F, FF, G, GG, H, 42D, DD, E, F, FF, G
S, M, L, XL, 2XL, 3XL

P58622 UNLINED MOLDED BRA
BLACK | BARE



PP504 COZY



32-40C, D, DD, E, F, FF, G, GG, H
S, M, L, XL, 2XL, 3XL

Stevie

P50120 LONGLINE STRAPLESS BUSTIER
BLACK FAUX LEATHER



PP504 COZY



S, M, L, XL, 2X-S PLUS, M PLUS, L PLUS, XL PLUS, 2X PLUS, 3X PLUS
S, M, L, XL, 2XL, 3XL

P50125 UNLINED WIRED BRA
BLACK FAUX LEATHER



P50124 HIGH WAIST THONG



30-42D, DD, E, F, FF, G, 30-40GG, H
S-3XL

Mia Lace

P5951 WIRE-FREE PADDED LACE BRALETTE
BARE | SANDSTONE | BLACK | RIORED | SAPPHIRE



PP306 MICRO DRESSY/P5955 MIA HIPSTER



BARE, BLACK: 30-42C, D, DD, E, F, FF, G, 30-40GG, H
SANDSTONE, RIO RED, SAPPHIRE: 30-40C, D, DD, E, F, FF, G, GG, H

S, M, L, XL, 2XL, 3XL

P5959 CHEMISE
PEARL WHITE | BLACK



S, M, L, XL, 2X- S PLUS, M PLUS, L PLUS, XL PLUS, 2X PLUS, 3X PLUS

Pearl

P60921 NON-PADDED SEAMLESS MINIMIZER BRA
CAMEO ROSE | BLACK | RIO RED



P6093 FRENCH CUT



CAMEO ROSE, BLACK: 32-42C, 30-42D, DD, E, F, FF, G, 30-40GG, H
RIO RED: 30-42D, DD, E, F, FF, G, 30-40GG, H
S, M, L, XL, 2XL, 3XL

Dynamic

P5541 PADDED PERFORMANCE
SPORTS BRA
BLACK



PP505 BONDED



34-44C, 30-44D, DD, E, F, FF, G
S, M, L, XL, 2XL, 3XL

Wave

P6052 FRONT ZIPPER
SPORTS BRA
NAUTICAL BLUE | BLACK



PP505 BONDED



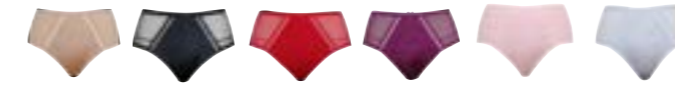
32-40C, D, DD, E, F, FF, G, GG, H
S, M, L, XL, 2XL, 3XL

Shea

P6062 PLUNGE UNLINED BRA
BARE | BLACK | RACING RED | BLACKBERRY | PETAL PINK | SILVER



P60632 SHEA BRIEF



BARE, BLACK, SILVER: 34-42C, 30-42D, DD, E, F, FF, G, 30-40GG, H
RACING RED, BLACKBERRY, PETAL PINK: 30-40D, DD, E, F, FF, G, GG, H
S, M, L, XL, 2XL, 3XL

SHEAWEAR

Shea

P60631 HIGH WAIST SLIMMER BRIEF
BARE | BLACK

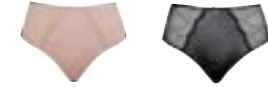


S, M, L, XL, 2XL, 3XL

P6091 LONGLINE PLUNGE BRA
CAMEO ROSE | BLACK



P6093 FRENCH CUT

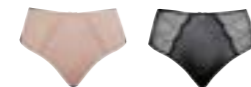


32-40C, D, DD, E, F, FF, G, GG, H
S, M, L, XL, 2XL, 3XL

P60923 UNLINED BRA
CAMEO ROSE | BLACK



P6093 FRENCH CUT



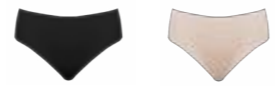
34-42C, 30-42D, DD, E, F, FF, G,
30-40GG, H
S, M, L, XL, 2XL, 3XL

Acitve

P62121 WIRE-FREE ACTIVE BRA
BLACK | BARE



PP505 BONDED



30-40D, DD, E, F, FF, G, GG, H
S, M, L, XL, 2XL, 3XL

Shea

P6061 SPACER T-SHIRT BRA
BARE | BLACK | PETAL PINK



P60632 SHEA BRIEF



34-42C, 30-42D, DD, E, F, FF, G, 30-40GG, H

P60671 LONGLINE STRAPLESS BRA
BLACK | RACING RED



P60632 SHEA BRIEF



32-42C, 30-42D, DD, E, F, FF, G, 30-38GG, H
S, M, L, XL, 2XL, 3XL

Leila

NB502 NURSING BRA
BARE | BLACK



PP504 COZY



34-44C, 32-44D, DD, E, F, FF, G,
32-40GG, H
S, M, L, XL, 2XL, 3XL

PANTY PROGRAM

Bonded

PP505 HIPSTER
EUROPEAN NUDE | BLACK
RACING RED



S, M, L, XL, 2XL, 3XL

Bonded

PP5031 FRENCH CUT
PORCELAIN | MID NUDE | BLACK
RACING RED



S, M, L, XL, 2XL, 3XL

Cozy

PP504 HIPSTER
PEARL WHITE | BARE | SANDSTONE
CHARCOAL | BLACK | RACING RED | MARINE BLUE



S, M, L, XL, 2XL, 3XL

Cozy

PP5032 BRIEF
PEARL WHITE | BARE | BLACK | SPICE



S, M, L, XL, 2XL, 3XL

Pearl

P6093 FRENCH CUT
CAMEO ROSE | BLACK | RIO RED



S, M, L, XL, 2XL, 3XL

Micro Dressy

PP306 FRENCH CUT
PEARL WHITE | CAMEO ROSE | SANDSTONE | BLACK
RACING RED | RIO RED



S, M, L, XL, 2XL, 3XL

Mia Hipster

P5955 HIPSTER
PEARL WHITE | CAMEO ROSE | BLACK
RACING RED | SAPPHIRE



S, M, L, XL, 2XL, 3XL

Shea

P60632 BRIEF
BARE | BLACK | RACING RED | BLACKBERRY
PETAL PINK | SILVER



S, M, L, XL, 2XL, 3XL

Stevie

P50124 HIGH WAIST THONG
BLACK FAUX LEATHER



S, M, L, XL, 2XL, 3XL

SIZE CHARTS

CUP SIZE LINGERIE

USA	A	B	C	D	DD	DDD	G	H	I	J	K	L	M	N	O
UK	A	B	C	D	DD	E	F	FF	G	GG	H	HH	J	JJ	K
FRANCE	A	B	C	D	E	F	G	H	I	J	K	L	M	N	O
EUROPE	A	B	C	D	E	F	G	H	I	J	K	L	M	N	O
ITALY	A	B	C	D	DD	E	F	FF	G	GG	H	HH	J	JJ	K
AUSTRALIA	A	B	C	D	DD	E	F	FF	G	GG	H	HH	J	JJ	K
INTL	B	C	D	E	F	G	H	I	J	K	L	M	N	O	P

BAND CONVERSION

USA	30	32	34	36	38	40	42	44
UK	30	32	34	36	38	40	42	44
FRANCE	80	85	90	95	100	105	110	115
EUROPE	65	70	75	80	85	90	95	100
ITALY	0	1	2	3	4	5	6	7
AUSTRALIA	8	10	12	14	16	18	20	22
INTL	65	70	75	80	85	90	95	100

PANTY SIZE CHART

USA, UK, FRANCE, EUROPE, ITALY, AUSTRALIA	S	M	L	XL	2X	3X
---	---	---	---	----	----	----

Match your UK bra size with your panty size to find your PERFECT HYBRID SIZE

AVERAGE FIT

Bra Cup Size	Up to a D Cup	Up to F Cup	Up to G Cup	Up to G Cup
Panty Size	Small	Medium	Large	XLarge
	S	M	L	XL

FULL BUSTED FIT

Bra Cup Size	DD Cup +	FF Cup +	GG Cup +
Panty Size	Small	Medium	Large
	S Plus	M Plus	L Plus

FULL FIGURE FIT

Bra Cup Size	GG Cup +	Up to G Cup	GG Cup +	GG Cup +
Panty Size	XLarge	2X	2X	3X
	XL Plus	2X	2X Plus	3X Plus

*Use our size conversion chart to know your Parfait UK Bra size



U.S. HEADQUARTERS

19690 San Jose Ave.
Rowland Heights, CA 91748, USA
Tel: +1 562 213 0604
Fax: +1 562 213 0605
sales@parfaitlingerie.com

UK / EUROPE

Davenport House,
16 Pepper Street, London
E14 9RP, United Kingdom
Tel: +44 (0) 20 3475 7830
Fax: +44 (0) 20 3475 7839
eu@parfaitlingerie.com

CANADA

150-10451 Shellbridge
Way, Richmond, Bc
V6X2W8, Canada
Tel: +1 888 841 4125
Fax: +1 888 841 7051
sales@parfaitlingerie.com

PARFAIT
www.parfaitlingerie.com